

SECTION 00 91 10

ADDENDUM NUMBER 3

PARTICULARS

- 1.01 DATE: October 6, 2023**
- 1.02 PROJECT: ERNEST KNIGHT LLC FIRE ALARM SYSTEM**
- 1.03 PROJECT NUMBER: 26236.0 DCM/BC NO. 2023632**
- 1.04 OWNER: ALABAMA A&M UNIVERSITY**
- 1.05 ARCHITECT: HYDE ENGINEERING, INC.**

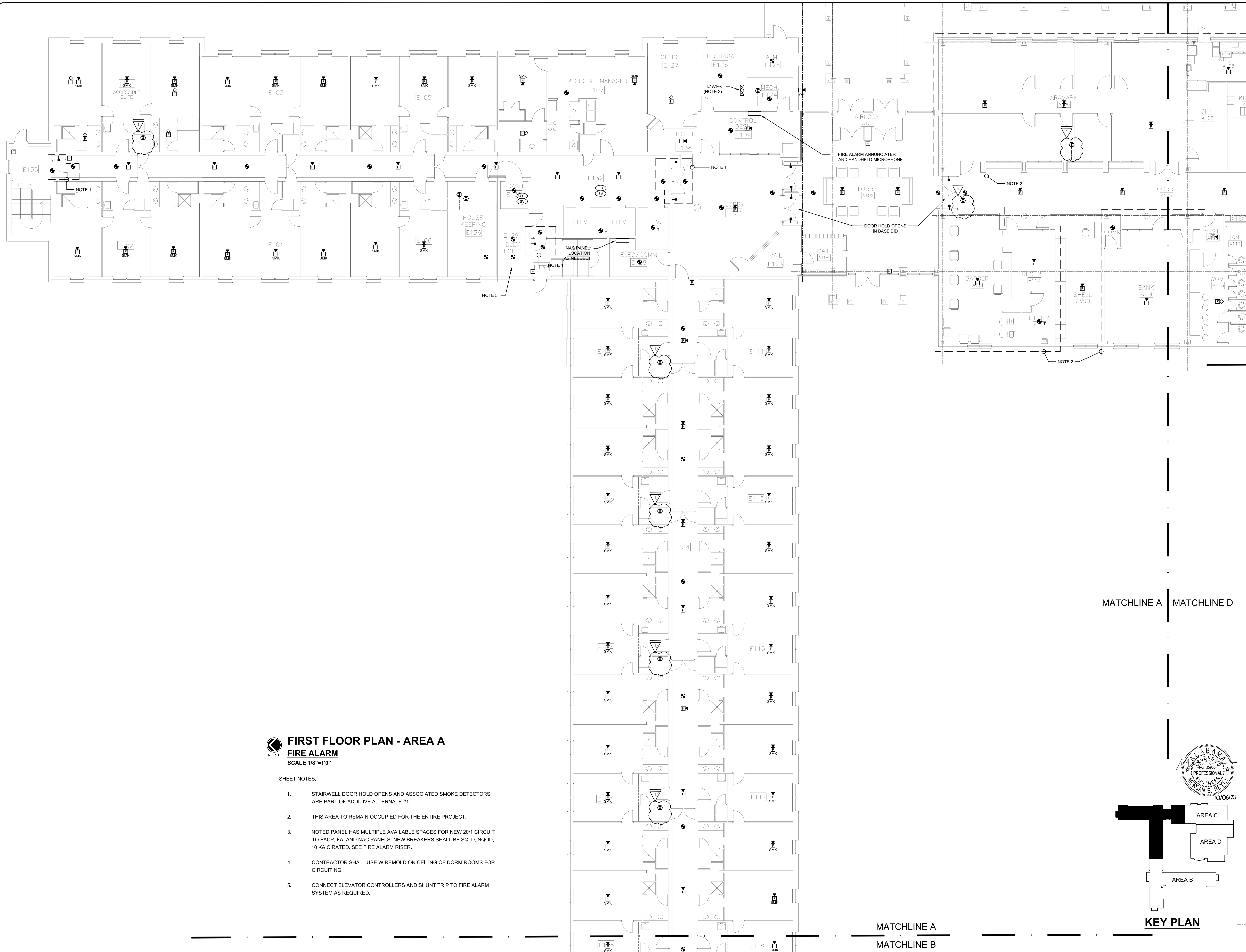
TO PROSPECTIVE BIDDERS

- 2.01 THIS ADDENDUM FORMS A PART OF THE CONTRACT DOCUMENTS AND MODIFIES THE BIDDING DOCUMENTS DATED August 28, 2023, WITH AMENDMENTS AND ADDITIONS NOTED BELOW.**
- 2.02 ACKNOWLEDGE RECEIPT OF THIS ADDENDUM IN THE SPACE PROVIDED IN THE PROPOSAL FORM. FAILURE TO DO SO MAY DISQUALIFY THE BIDDER.**
- 2.03 THIS ADDENDUM CONSISTS OF 1 - 8.5x11 sheets and 7 full size sheets.**

CHANGES TO THE DRAWINGS

- 3.01 SHEET E2.1 – FIRST FLOOR PLAN – AREA A – FIRE ALARM**
A. Add duct detectors as shown.
- 3.02 SHEET E2.2 – FIRST FLOOR PLAN – AREA B – FIRE ALARM**
A. Add duct detectors as shown.
- 3.03 SHEET E2.3 – FIRST FLOOR PLAN – AREA C – FIRE ALARM**
A. Add duct detectors as shown.
- 3.04 SHEET E3.1 – SECOND FLOOR PLAN – AREA A – FIRE ALARM**
A. Add duct detectors as shown.
- 3.05 SHEET E3.2 – SECOND FLOOR PLAN – AREA B – FIRE ALARM**
A. Add duct detectors as shown.
- 3.06 SHEET E4.1 – THIRD, FOURTH, AND FIFTH FLOOR PLAN – AREA A – FIRE ALARM**
A. Add duct detectors as shown. Typical of each floor.
- 3.07 SHEET E4.2 – THIRD, FOURTH, AND FIFTH FLOOR PLAN – AREA B – FIRE ALARM**
A. Add duct detectors as shown. Typical of each floor.

END OF ADDENDUM NUMBER 3

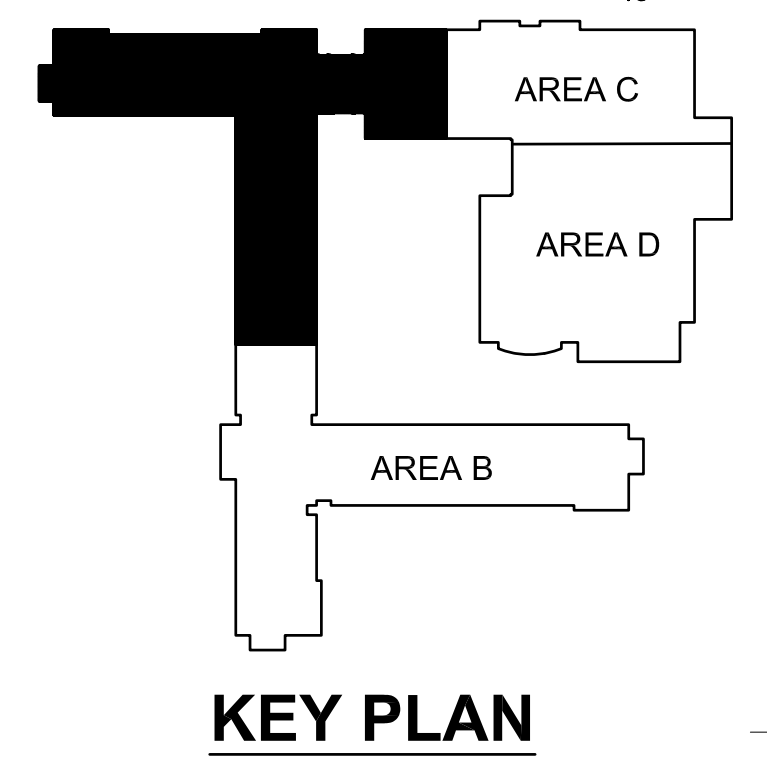


FIRST FLOOR PLAN - AREA A
FIRE ALARM
 SCALE 1/8"=1'0"

- SHEET NOTES:
1. STAIRWELL DOOR HOLD OPENS AND ASSOCIATED SMOKE DETECTORS ARE PART OF ADDITIVE ALTERNATE #1.
 2. THIS AREA TO REMAIN OCCUPIED FOR THE ENTIRE PROJECT.
 3. NOTED PANEL HAS MULTIPLE AVAILABLE SPACES FOR NEW 20'1 CIRCUIT TO FACP, FA, AND NAC PANELS. NEW BREAKERS SHALL BE SQ. D, NOOD, 10 KAIC RATED. SEE FIRE ALARM RISER.
 4. CONTRACTOR SHALL USE WIREMOLD ON CEILING OF DORM ROOMS FOR CIRCUITING.
 5. CONNECT ELEVATOR CONTROLLERS AND SHUNT TRIP TO FIRE ALARM SYSTEM AS REQUIRED.

MATCHLINE A MATCHLINE D

MATCHLINE A
 MATCHLINE B



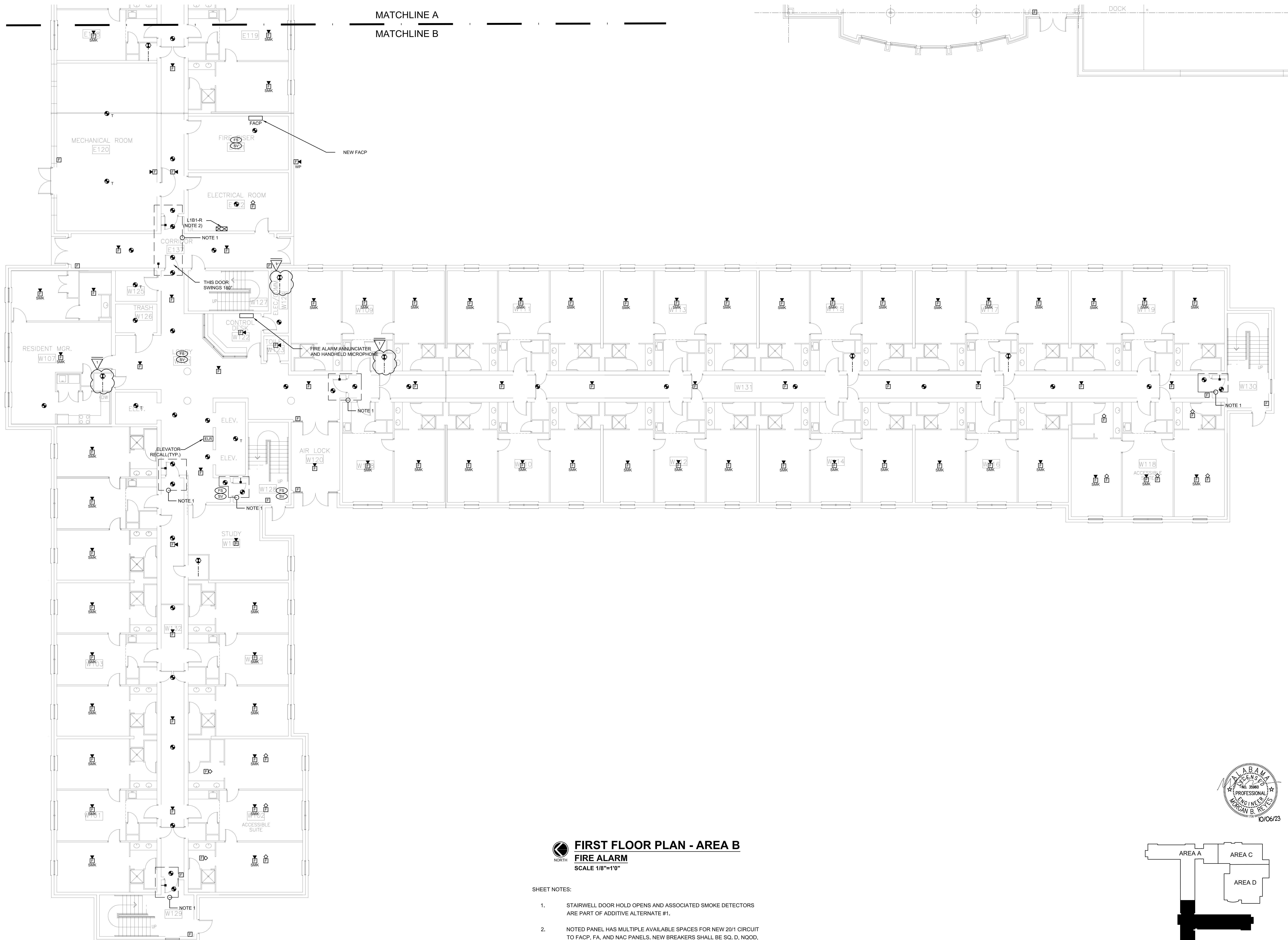
Hyde Engineering, Inc.
 1525 Piedmont Parkway, Suite 275 • Huntsville, AL 35891
 (256) 270-8013 • FAX (256) 962-9911 • info@hydeeng.com

NEW FIRE ALARM SYSTEM FOR ERNEST KNIGHT LIVING AND LEARNING COMPLEX
ALABAMA A&M UNIVERSITY

NO.	REVISION	DATE
1	ADDENDUM #3	10/06/23

SEAL:

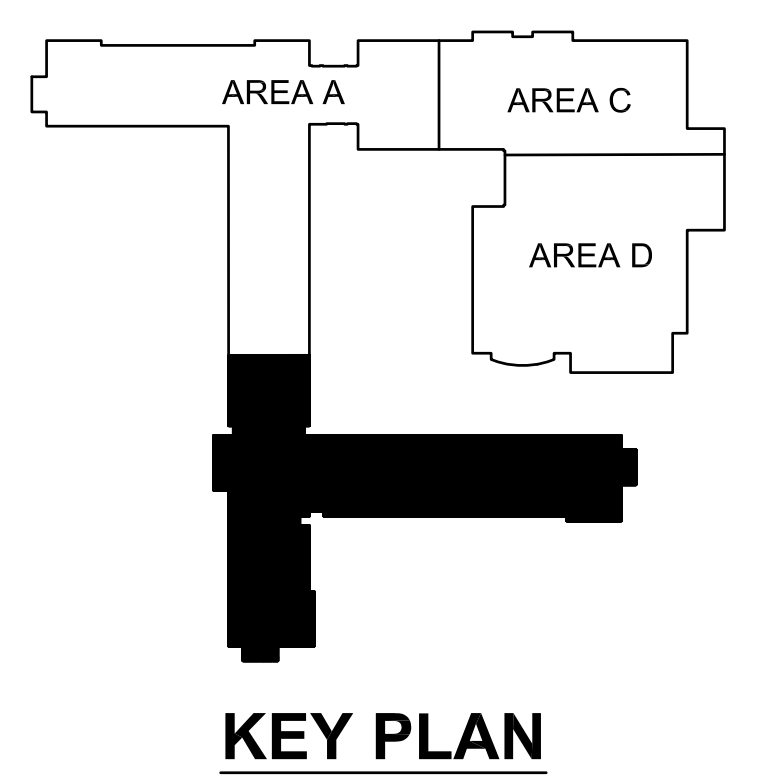
DATE: 08/28/23
 JOB NUMBER: 26236.0
 DRAWN BY: BR
 CHECKED BY: MBR
 DRAWING TITLE: FIRST FLOOR PLAN - AREA A - FIRE ALARM
 DRAWING NO. E2.1



MATCHLINE A
MATCHLINE B

FIRST FLOOR PLAN - AREA B
FIRE ALARM
SCALE 1/8"=1'0"

- SHEET NOTES:
1. STAIRWELL DOOR HOLD OPENS AND ASSOCIATED SMOKE DETECTORS ARE PART OF ADDITIVE ALTERNATE #1.
 2. NOTED PANEL HAS MULTIPLE AVAILABLE SPACES FOR NEW 20/1 CIRCUIT TO FACP, FA, AND NAC PANELS. NEW BREAKERS SHALL BE SQ, D, NQOD, 10 KAIC RATED. SEE FIRE ALARM RISER.
 3. CONTRACTOR SHALL USE WIREMOLD ON CEILING OF DORM ROOMS FOR CIRCUITING.

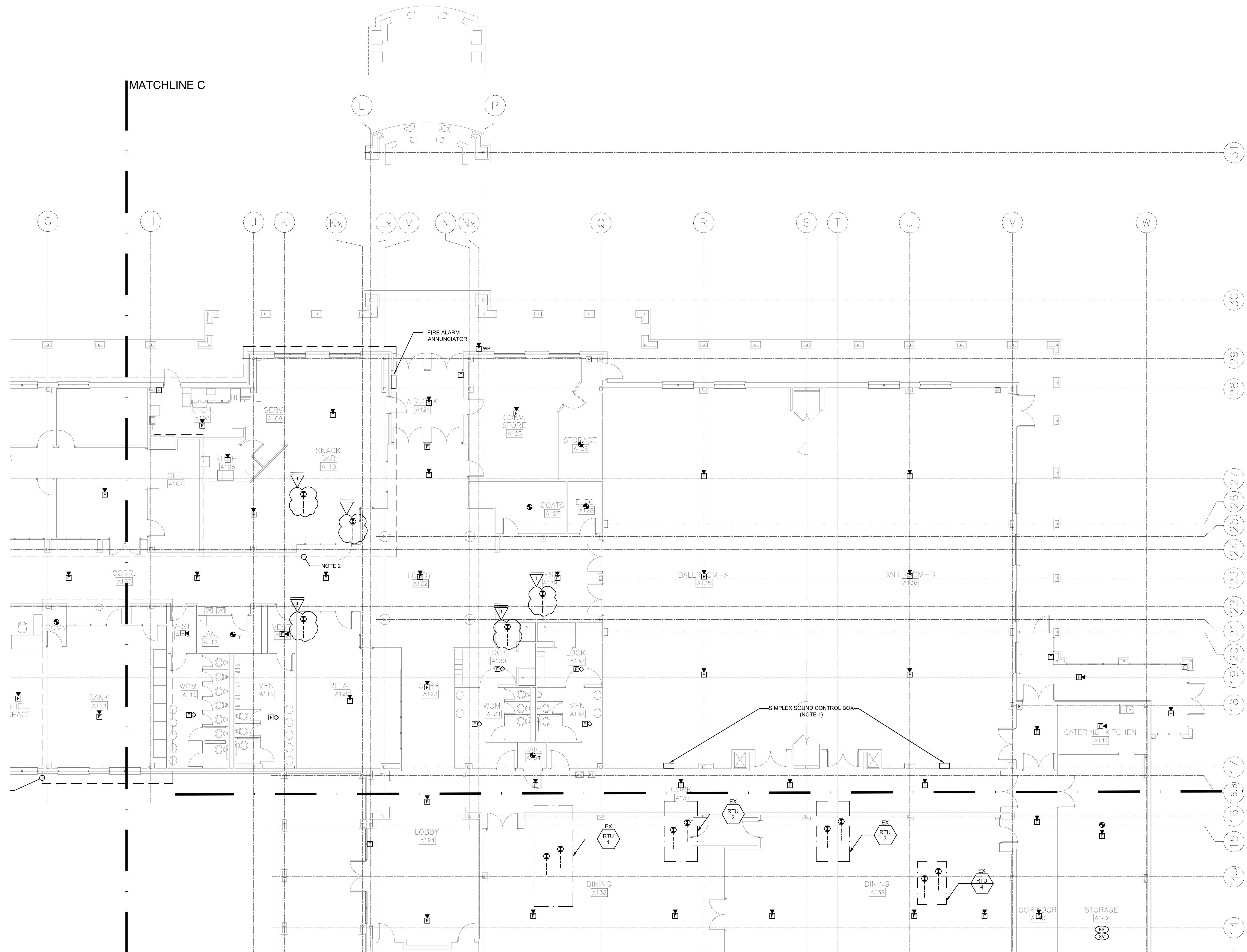


NEW FIRE ALARM SYSTEM FOR ERNEST KNIGHT LIVING AND LEARNING COMPLEX
ALABAMA A&M UNIVERSITY

NO.	REVISION	DATE
1	ADDENDUM #3	10/06/23

SEAL:

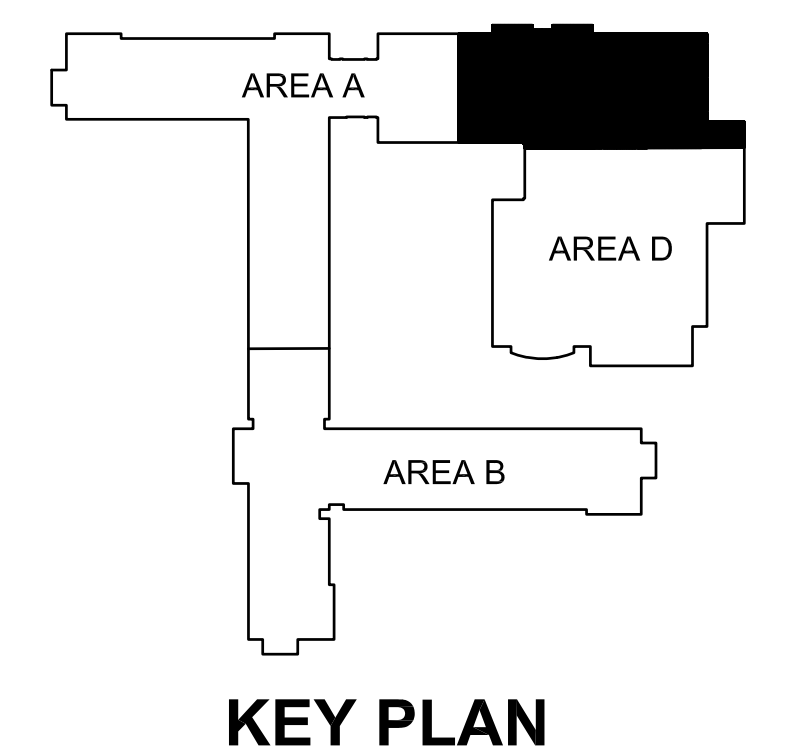
DATE:	08/28/2023
JOB NUMBER:	26236.0
DRAWN BY:	BR
CHECKED BY:	MBR
DRAWING TITLE:	FIRST FLOOR PLAN - AREA B - FIRE ALARM
DRAWING NO.:	E2.2



FIRST FLOOR PLAN - AREA C
FIRE ALARM
 SCALE 1/8"=1'-0"

- SHEET NOTES:
1. RECONNECT EXISTING SOUND CONTROL BOX TO FIRE ALARM SYSTEM AS REQUIRED.
 2. THIS AREA TO REMAIN OCCUPIED FOR THE ENTIRE PROJECT.

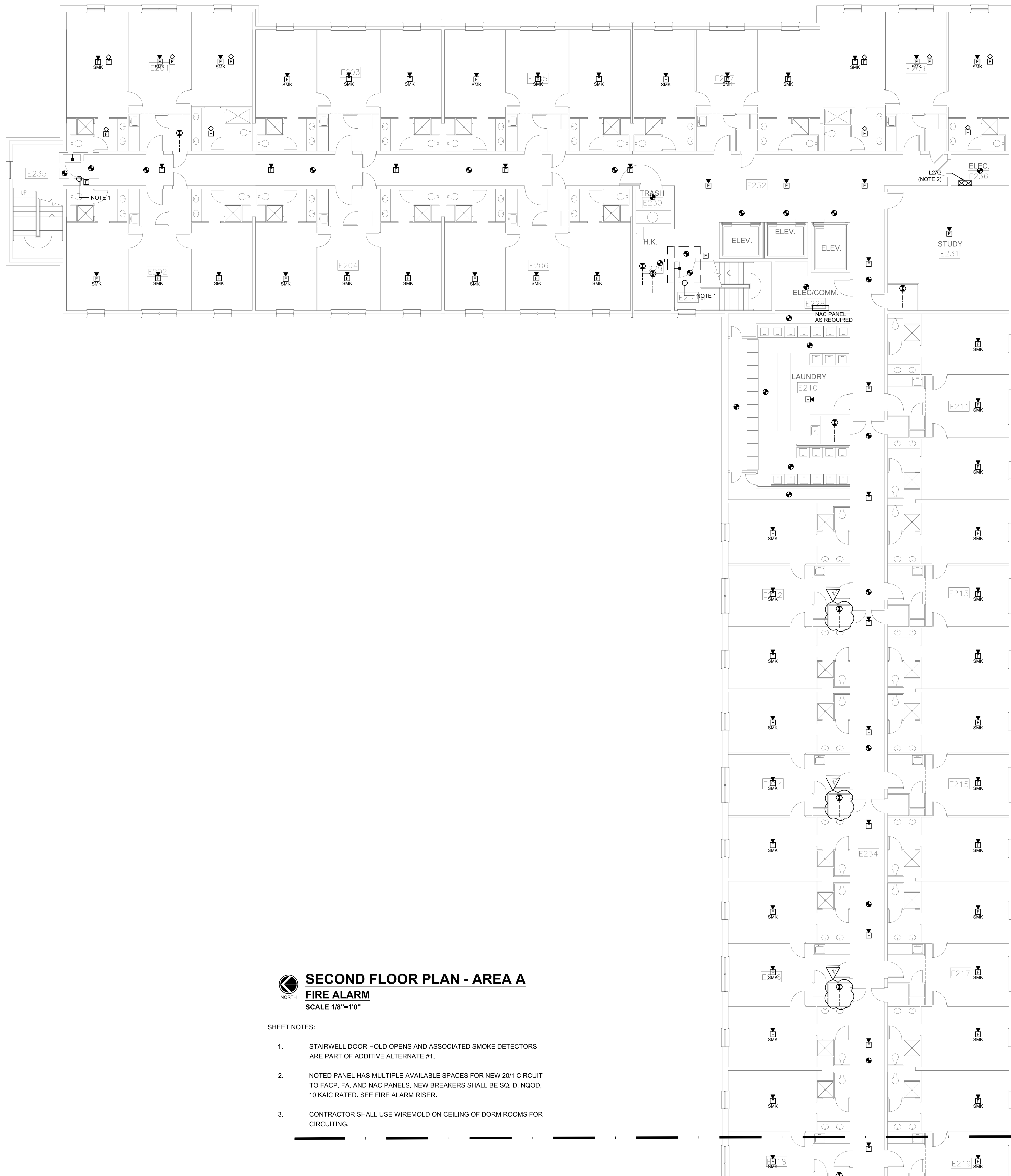
MATCHLINE C
 MATCHLINE D



NO.	REVISION	DATE
1	ADDENDUM #3	10/06/23

SEAL: WILLIAM B. RYLEY, PROFESSIONAL ENGINEER, STATE OF ALABAMA, LICENSE NO. 35960, 10/06/23

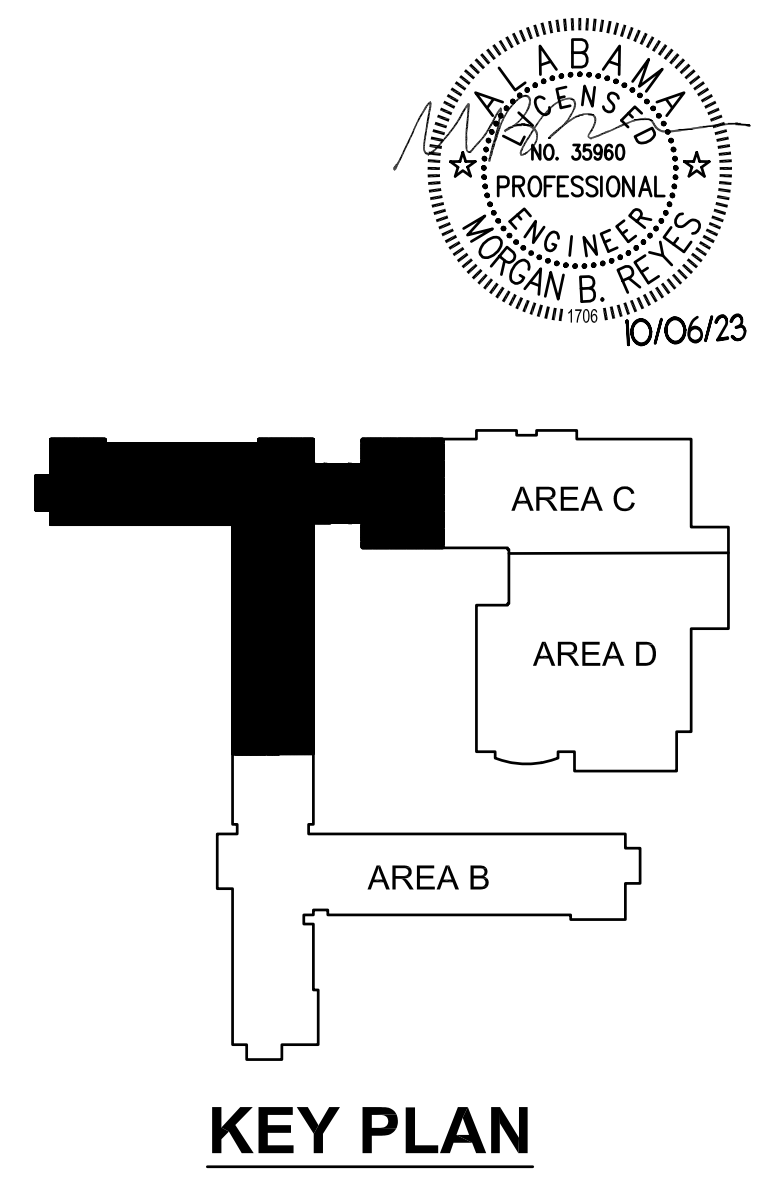
DATE: 08/28/2023
 JOB NUMBER: 26236.0
 DRAWN BY: BR
 CHECKED BY: MBR
 DRAWING TITLE: FIRST FLOOR PLAN - AREA C - FIRE ALARM
 DRAWING NO. E2.3



SECOND FLOOR PLAN - AREA A
FIRE ALARM
 SCALE 1/8"=1'0"

SHEET NOTES:

1. STAIRWELL DOOR HOLD OPENS AND ASSOCIATED SMOKE DETECTORS ARE PART OF ADDITIVE ALTERNATE #1.
2. NOTED PANEL HAS MULTIPLE AVAILABLE SPACES FOR NEW 20/1 CIRCUIT TO FACP, FA, AND NAC PANELS. NEW BREAKERS SHALL BE SQ. D, NQOD, 10 KAIC RATED. SEE FIRE ALARM RISER.
3. CONTRACTOR SHALL USE WIREMOLD ON CEILING OF DORM ROOMS FOR CIRCUITING.

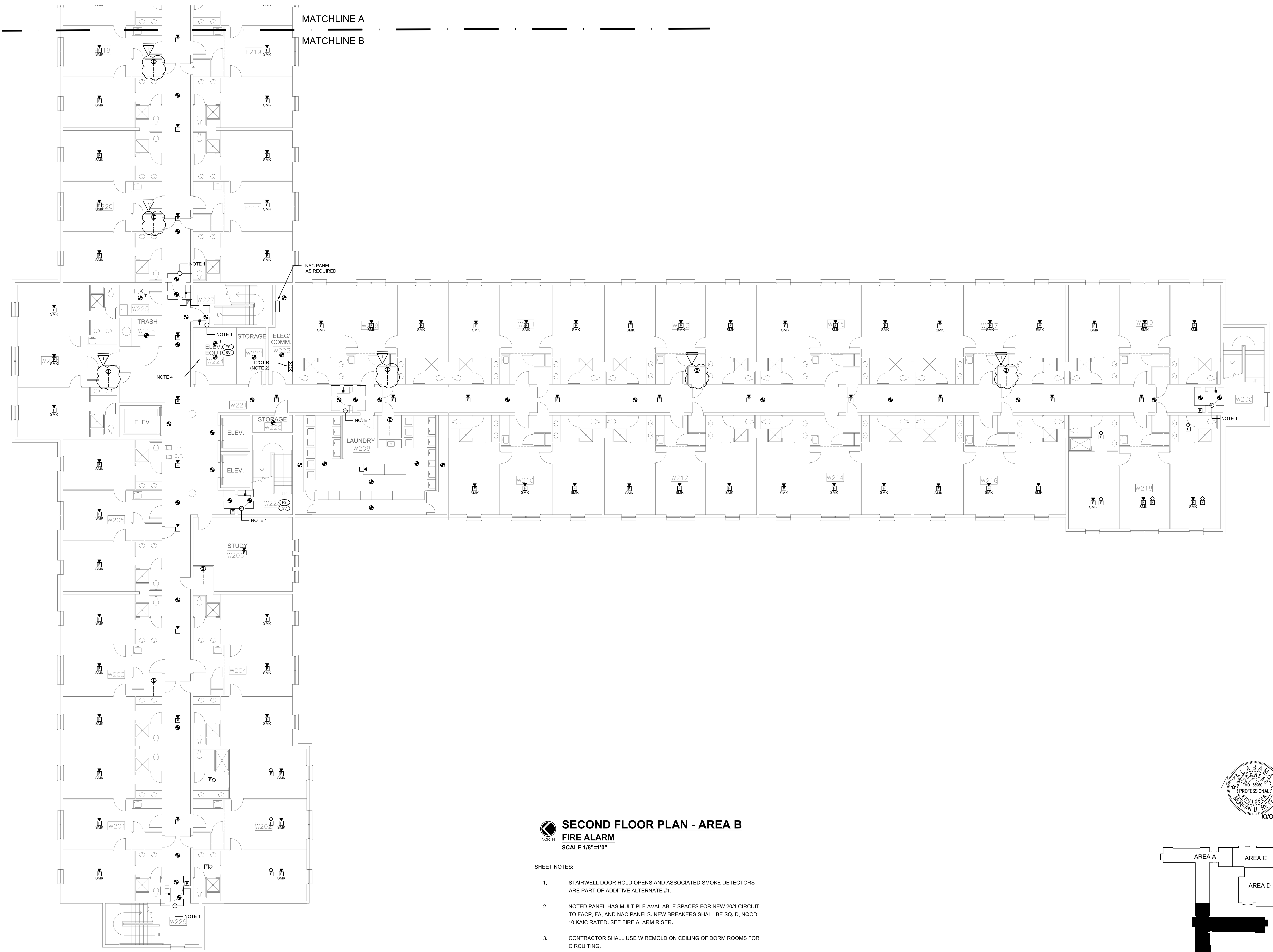


MATCHLINE A
 MATCHLINE B

NO.	REVISION	DATE
1	ADDENDUM #3	10/06/23

SEAL: [Professional Engineer Seal - Alabama, No. 35960, Date 10/06/23]

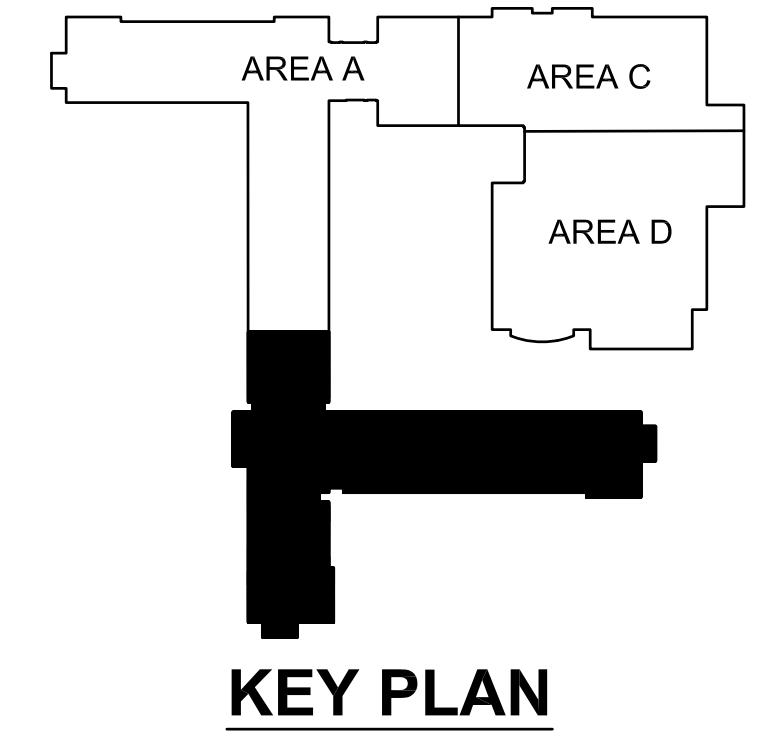
DATE:	08/28/2023
JOB NUMBER:	26236.0
DRAWN BY:	BR
CHECKED BY:	MBR
DRAWING TITLE:	SECOND FLOOR PLAN - AREA A - FIRE ALARM
DRAWING NO.:	E3.1



MATCHLINE A
MATCHLINE B

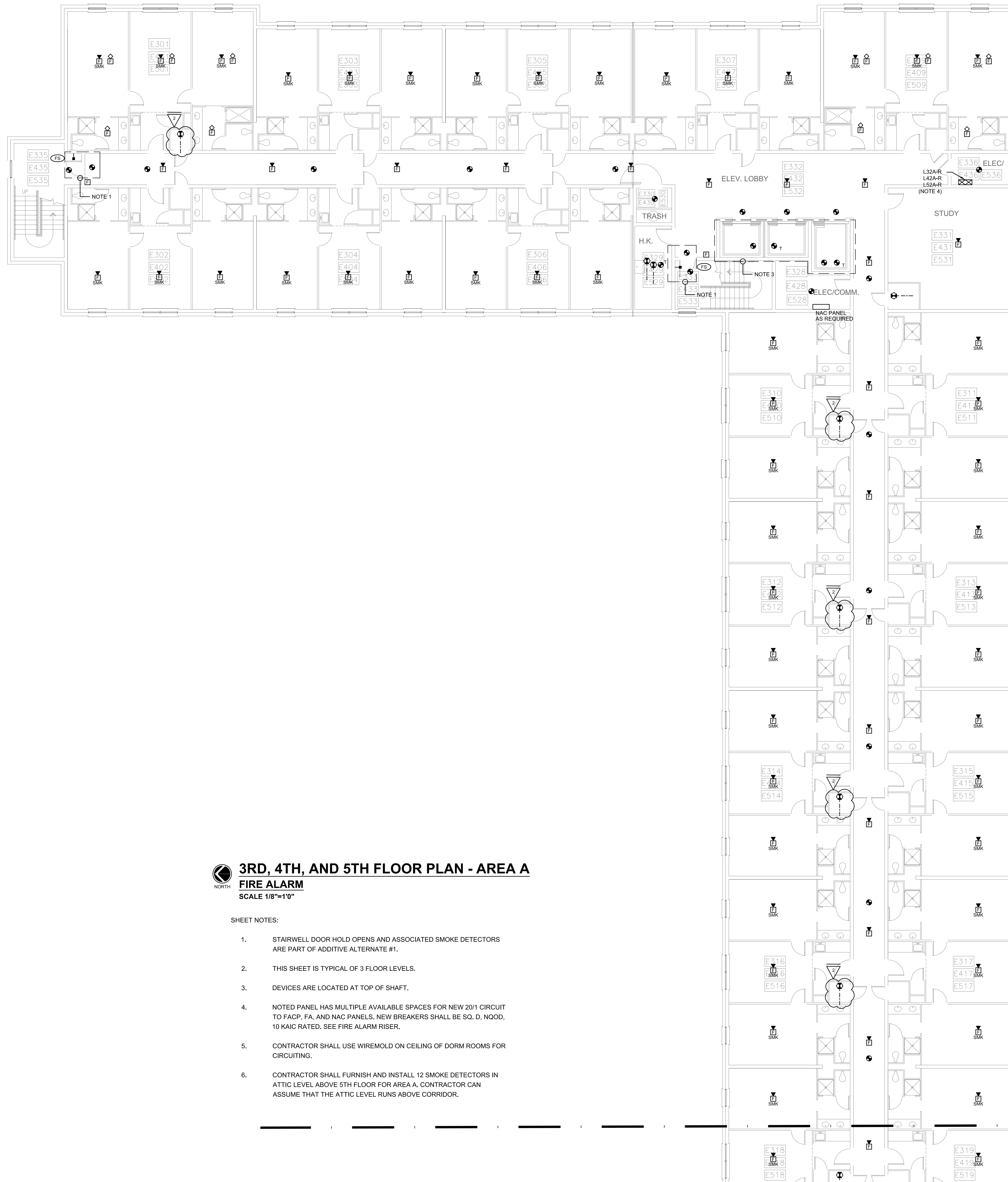
SECOND FLOOR PLAN - AREA B
FIRE ALARM
SCALE 1/8"=1'0"

- SHEET NOTES:
1. STAIRWELL DOOR HOLD OPENS AND ASSOCIATED SMOKE DETECTORS ARE PART OF ADDITIVE ALTERNATE #1.
 2. NOTED PANEL HAS MULTIPLE AVAILABLE SPACES FOR NEW 20/1 CIRCUIT TO FACP, FA, AND NAC PANELS. NEW BREAKERS SHALL BE SQ. D. NQOD, 10 KAIC RATED. SEE FIRE ALARM RISER.
 3. CONTRACTOR SHALL USE WIREMOLD ON CEILING OF DORM ROOMS FOR CIRCUITING.
 4. CONNECT ELEVATOR CONTROLLERS AND SHUNT TRIP TO FIRE ALARM SYSTEM AS REQUIRED.



NO.	REVISION	DATE
1	ADDENDUM #3	10/06/23

DATE: 08/29/23
JOB NUMBER: 26236.0
DRAWN BY: BR
CHECKED BY: MBR
DRAWING TITLE: **SECOND FLOOR PLAN - AREA B - FIRE ALARM**
DRAWING NO. **E3.2**

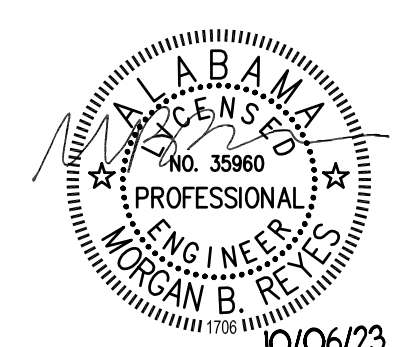
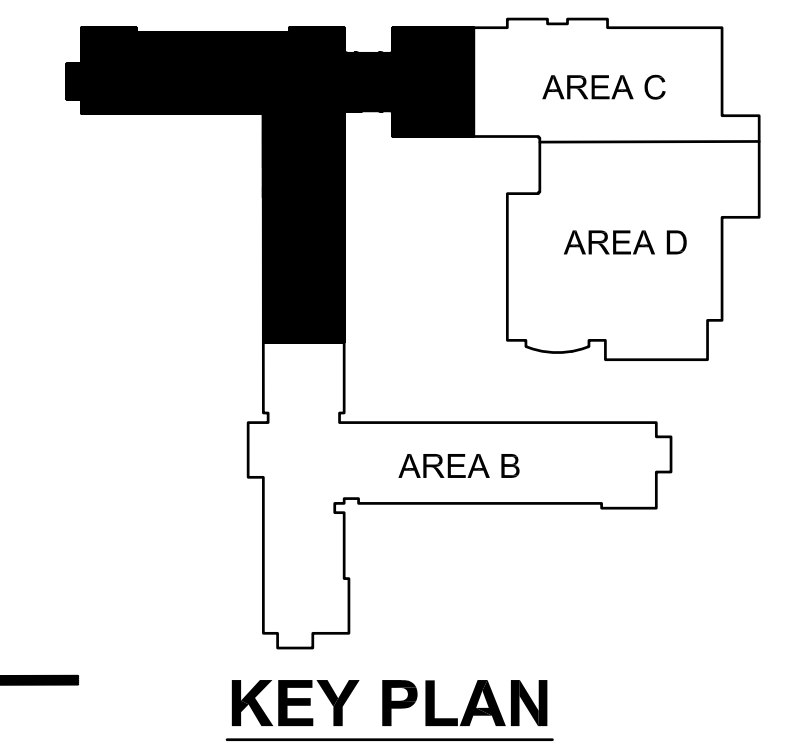


3RD, 4TH, AND 5TH FLOOR PLAN - AREA A
FIRE ALARM
 SCALE 1/8"=1'0"

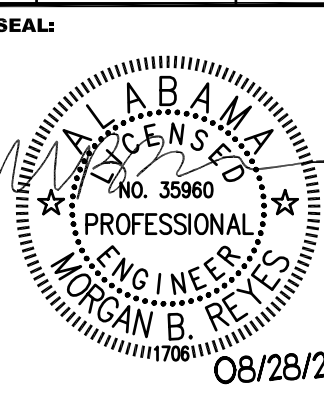
SHEET NOTES:

1. STAIRWELL DOOR HOLD OPENS AND ASSOCIATED SMOKE DETECTORS ARE PART OF ADDITIVE ALTERNATE #1.
2. THIS SHEET IS TYPICAL OF 3 FLOOR LEVELS.
3. DEVICES ARE LOCATED AT TOP OF SHAFT.
4. NOTED PANEL HAS MULTIPLE AVAILABLE SPACES FOR NEW 20/1 CIRCUIT TO FACP, FA, AND NAC PANELS. NEW BREAKERS SHALL BE SQ. D, NOOD, 10 KAIC RATED. SEE FIRE ALARM RISER.
5. CONTRACTOR SHALL USE WIREMOLD ON CEILING OF DORM ROOMS FOR CIRCUITING.
6. CONTRACTOR SHALL FURNISH AND INSTALL 12 SMOKE DETECTORS IN ATTIC LEVEL ABOVE 5TH FLOOR FOR AREA A. CONTRACTOR CAN ASSUME THAT THE ATTIC LEVEL RUNS ABOVE CORRIDOR.

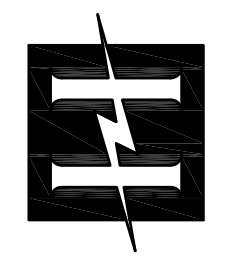
MATCHLINE A
 MATCHLINE B



NO.	REVISION	DATE
1	ADDENDUM #2	09/29/23
2	ADDENDUM #3	10/06/23



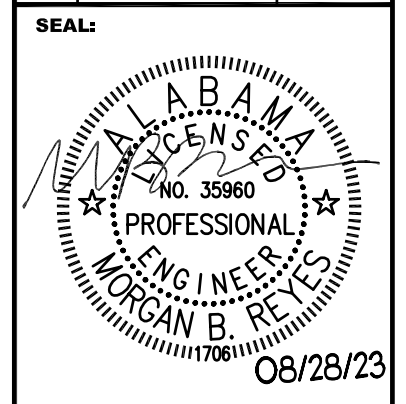
DATE: 08/28/2023
 JOB NUMBER: 26236.0
 DRAWN BY: BR
 CHECKED BY: MBR
 DRAWING TITLE:
THIRD, FOURTH, & FIFTH FLOOR PLAN - AREA A - FIRE ALARM



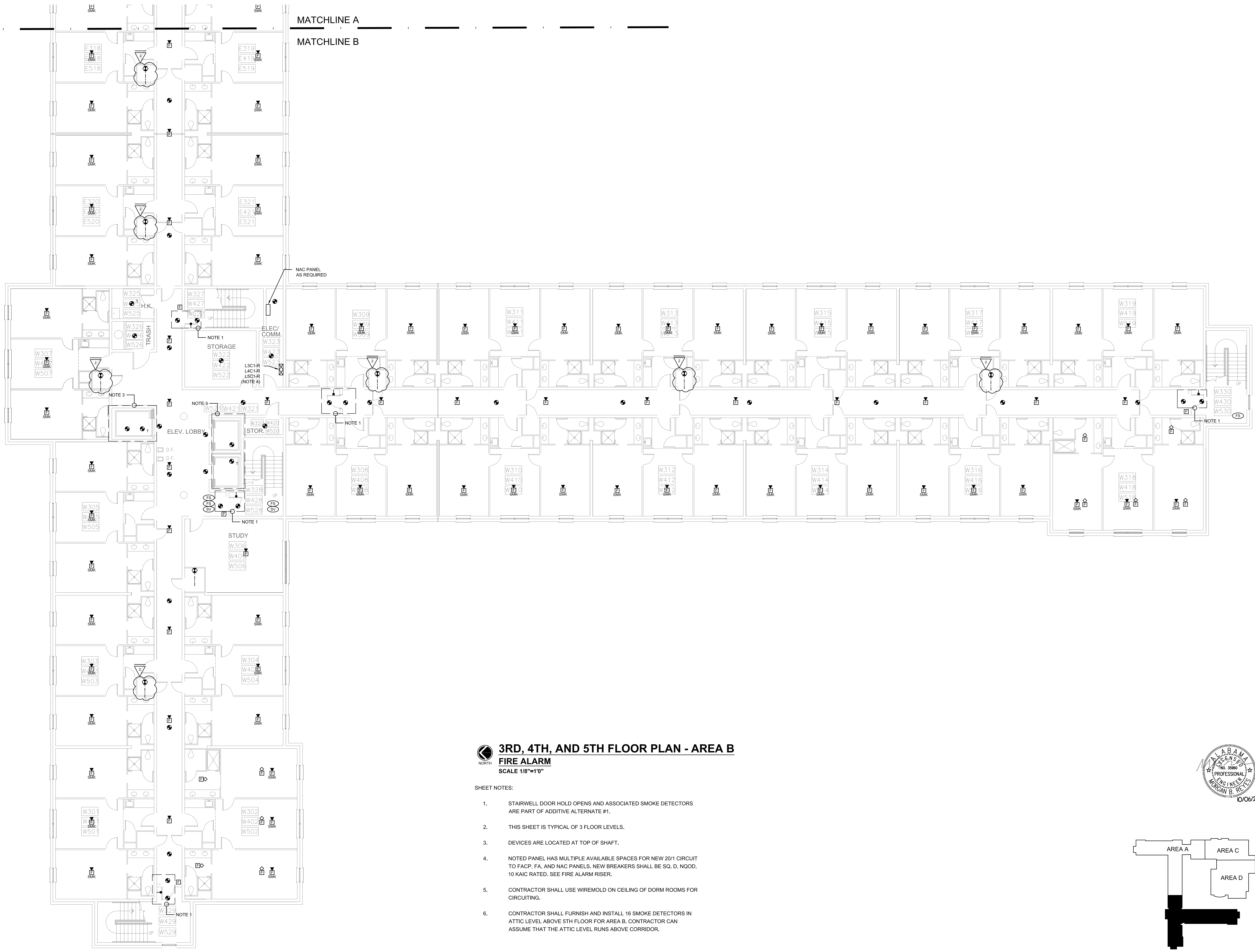
Hyde Engineering, Inc.
 1595 Piedmont Parkway, Suite 275 • Huntsville, AL 35801
 (256) 270-8013 • FAX (256) 962-9911 • info@hyde-eng.com

**NEW FIRE ALARM SYSTEM FOR ERNEST KNIGHT LIVING AND LEARNING COMPLEX
 ALABAMA A&M UNIVERSITY**

NO.	REVISION	DATE
1	ADDENDUM #2	08/29/23
2	ADDENDUM #3	10/06/23



DATE:	08/29/23
JOB NUMBER:	26236.0
DRAWN BY:	BR
CHECKED BY:	MBR
DRAWING TITLE:	THIRD, FOURTH, & FIFTH FLOOR PLAN - AREA B - FIRE ALARM
DRAWING NO.:	E4.2



**3RD, 4TH, AND 5TH FLOOR PLAN - AREA B
 FIRE ALARM
 SCALE 1/8"=1'0"**

- SHEET NOTES:
1. STAIRWELL DOOR HOLD OPENS AND ASSOCIATED SMOKE DETECTORS ARE PART OF ADDITIVE ALTERNATE #1.
 2. THIS SHEET IS TYPICAL OF 3 FLOOR LEVELS.
 3. DEVICES ARE LOCATED AT TOP OF SHAFT.
 4. NOTED PANEL HAS MULTIPLE AVAILABLE SPACES FOR NEW 20/1 CIRCUIT TO FACP, FA, AND NAC PANELS. NEW BREAKERS SHALL BE SQ. D, NQOD, 10 KAIC RATED. SEE FIRE ALARM RISER.
 5. CONTRACTOR SHALL USE WIREMOLD ON CEILING OF DORM ROOMS FOR CIRCUITING.
 6. CONTRACTOR SHALL FURNISH AND INSTALL 16 SMOKE DETECTORS IN ATTIC LEVEL ABOVE 5TH FLOOR FOR AREA B. CONTRACTOR CAN ASSUME THAT THE ATTIC LEVEL RUNS ABOVE CORRIDOR.

