

SECTION 00 91 17

ADDENDUM NUMBER 8



PARTICULARS

- 1.01 DATE: APRIL 13, 2021
- 1.02 PROJECT: WELCOME CENTER
- 1.03 PROJECT NUMBER: DCM NO. 2020604
- 1.04 OWNER: ALABAMA A&M UNIVERSITY
- 1.05 ARCHITECT: NOLA | VAN PEURSEM ARCHITECTS, PC

TO PROSPECTIVE BIDDERS

- 2.01 THIS ADDENDUM FORMS A PART OF THE CONTRACT DOCUMENTS AND MODIFIES THE BIDDING DOCUMENTS DATED JANUARY 25, 2021, WITH AMENDMENTS AND ADDITIONS NOTED BELOW.
- 2.02 ACKNOWLEDGE RECEIPT OF THIS ADDENDUM IN THE SPACE PROVIDED IN THE PROPOSAL FORM. FAILURE TO DO SO MAY DISQUALIFY THE BIDDER.
- 2.03 THIS ADDENDUM CONSISTS OF 5 PAGES.

CHANGES TO THE PROJECT MANUAL

3.01 SECTION 00 91 16 – ADDENDUM NUMBER 7

- A. Revise Paragraph 3.01.B to read as follows:
- B. Add Paragraph 1.05.R to read as follows:
 - R. Include the stipulated sum of \$5,000 for the field testing of storefront and curtainwall systems as outlined in the project manual. Should failure occur, any re-testing or additional testing shall be at the contractor's expense, and not by this allowance.

3.02 SECTION 01 21 00 – ALLOWANCES:

- A. Revise Paragraph 1.05.K to read as follows:
 - K. Include the stipulated sum of \$278,000 for purchase, delivery, assembly, placement, **and installation** of the items listed on Sheet FS-1.12 on the Schedule titled "Proprietary Equipment Schedule – Branding and Furnishing"; the items listed on Sheet FS-1.19 on the Schedule titled "Kitchen Equipment Proprietary Schedule (Items Supplied by Trimark Strategic"; and the items listed on Sheet FS-1.20 on the Schedule titled "Equipment Schedule (Items Supplied by The Food Service Provider)."
- B. Revise Paragraph 1.05.M to read as follows:
 - M. Include the stipulated sum on \$55,000 for purchase, delivery, assembly, **placement** and installation of the following items listed on Sheet FS-1.19 on the Schedule titled "Equipment Schedule (Items Supplied by Clayton Fixture)" and the associated millwork as shown on

Sheets FS- 1.8 through FS-1.11. And the following items listed on Sheet FS-1.20 on the Schedule titled "Equipment Schedule (Items Supplied by Millwork Manufacturer)" and the associated millwork as shown on Sheets FS-1.8 through FS-1.11.

3.03 SECTION 07 62 00 – SHEET METAL FLASHING AND TRIM:

A. Add Paragraph 2.08 and its subparagraphs to read as follows:

2.08 Soffit Panels:

- A. Pre-finished aluminum soffit panels to be Chicago Metal Supply and Fabrication, Inc., CMS – Regular Soffit Panel, matching trim, and accessories or approved equal.
 - 1. Color: As selected by Architect from manufacturer's full range.
 - 2. Panel With: 12 inches.

CHANGES TO THE DRAWINGS

4.01 SHEET A-1.3 – FIRST FLOOR PLAN:

A. Replace this sheet in its entirety. Revisions include the following: Added wall section marks.

4.02 SHEET A-1.4 – SECOND FLOOR PLAN:

A. Replace this sheet in its entirety. Revisions include the following: Added wall section marks.

4.03 SHEET A-4.1 – ROOM FINISH SCHEDULE:

A. Room Finish Schedule: At Storage 108B revise floor covering to read CONC-S.

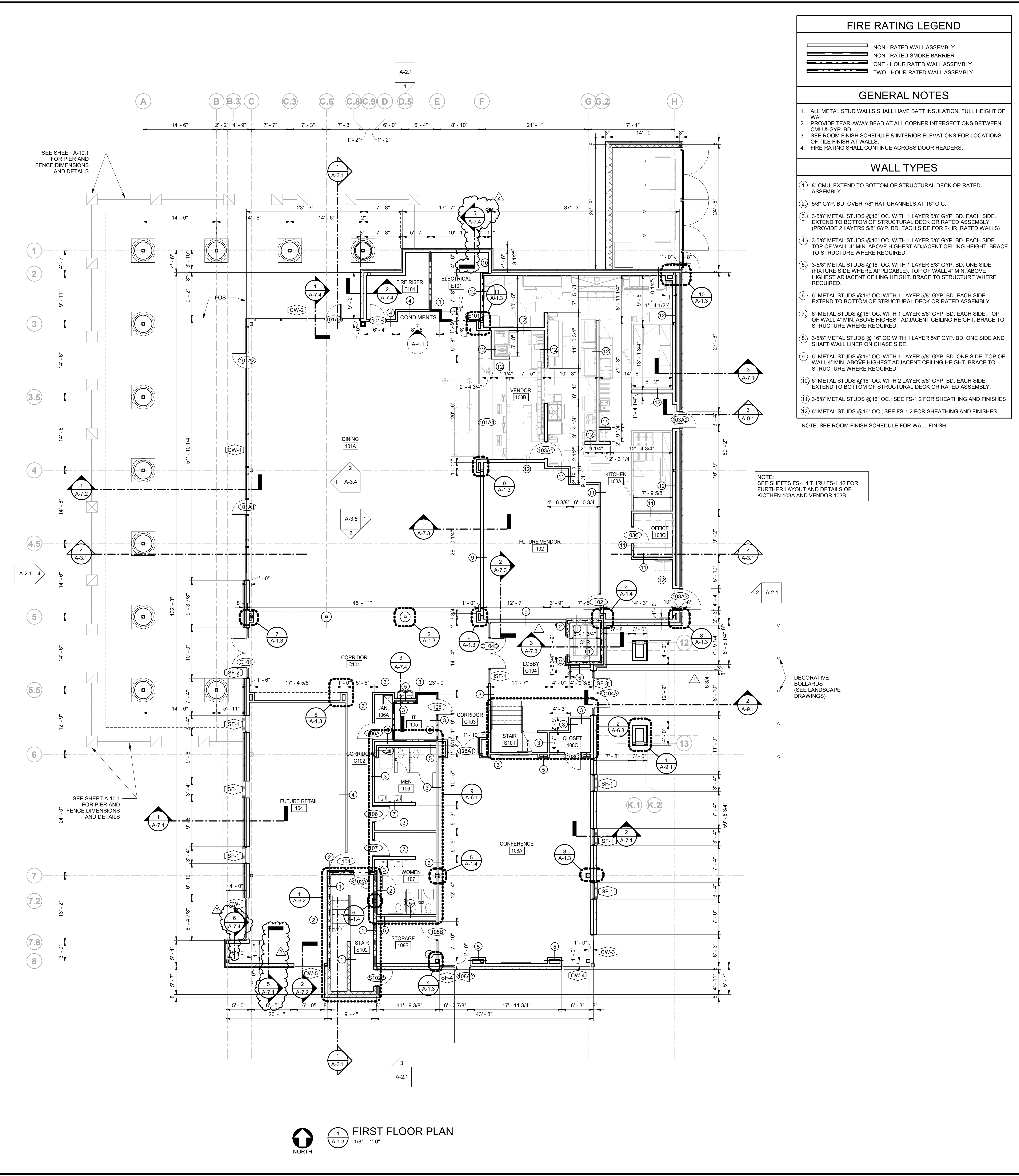
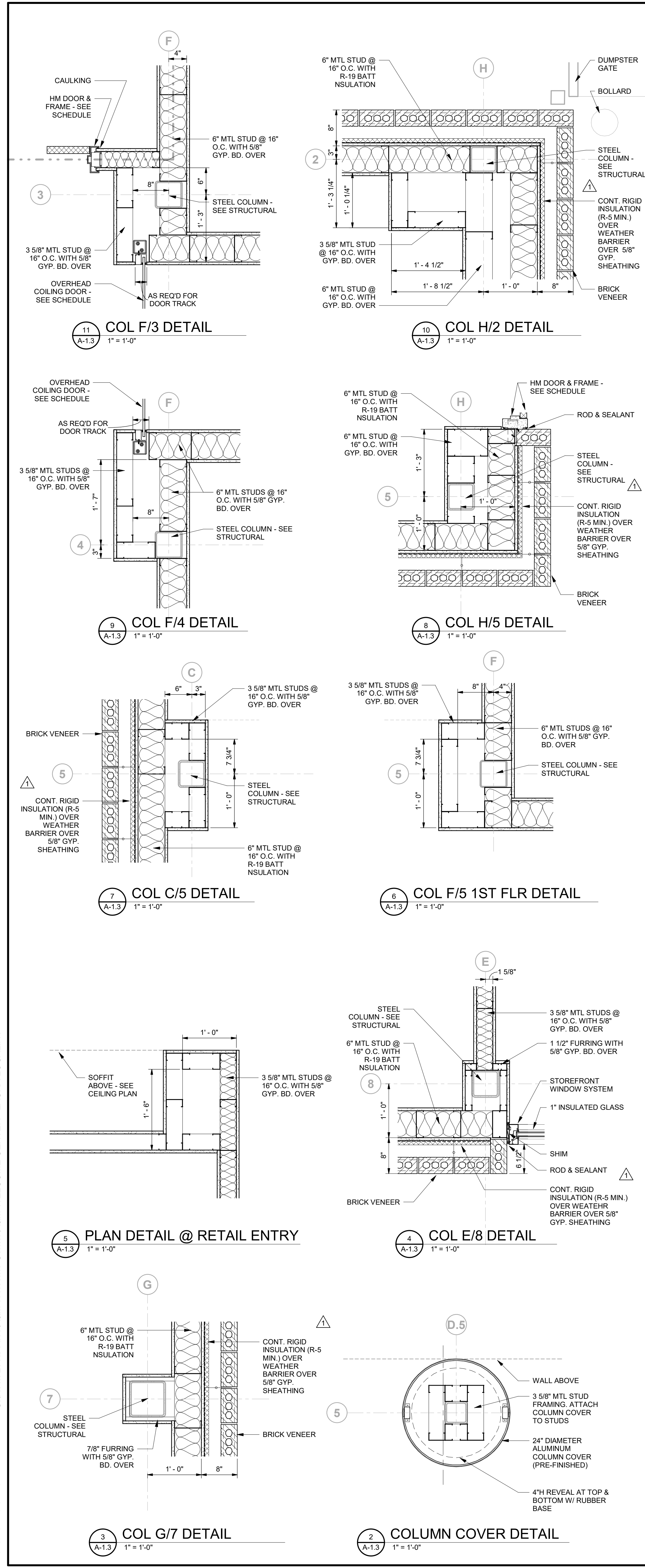
4.04 SHEET A-7.4 – WALL SECTIONS:

A. Replace this sheet in its entirety. Revisions include: two added wall sections.

4.05 ALL FOOD SERVICE SHEETS:

A. Clarification: All work shown that is not otherwise noted as not in contractor or to be provided by allowance is to be included in the contractor's base bid.

END OF ADDENDUM NUMBER 8



FIRE RATING LEGEND

	NON - RATED WALL ASSEMBLY
	NON - RATED SMOKE BARRIER
	ONE - HOUR RATED WALL ASSEMBLY
	TWO - HOUR RATED WALL ASSEMBLY

GENERAL NOTES

- ALL METAL STUD WALLS SHALL HAVE BATT INSULATION, FULL HEIGHT OF WALL.
- PROVIDE TEAR-AWAY BEAD AT ALL CORNER INTERSECTIONS BETWEEN CMU & GYP. BD.
- SEE ROOM FINISH SCHEDULE & INTERIOR ELEVATIONS FOR LOCATIONS OF TILE FINISH AT WALLS.
- FIRE RATING SHALL CONTINUE ACROSS DOOR HEADERS.

WALL TYPES

- 6" CMU, EXTEND TO BOTTOM OF STRUCTURAL DECK OR RATED ASSEMBLY.
- 5/8" GYP. BD. OVER 7/8" HAT CHANNELS AT 16" O.C.
- 3-5/8" METAL STUDS @ 16" O.C. WITH 1 LAYER 5/8" GYP. BD. EACH SIDE. EXTEND TO BOTTOM OF STRUCTURAL DECK OR RATED ASSEMBLY. (PROVIDE 2 LAYERS 5/8" GYP. BD. EACH SIDE FOR 2-HR. RATED WALLS)
- 3-5/8" METAL STUDS @ 16" O.C. WITH 1 LAYER 5/8" GYP. BD. EACH SIDE. TOP OF WALL 4" MIN. ABOVE HIGHEST ADJACENT CEILING HEIGHT. BRACE TO STRUCTURE WHERE REQUIRED.
- 3-5/8" METAL STUDS @ 16" O.C. WITH 1 LAYER 5/8" GYP. BD. ONE SIDE (FIXTURE SIDE WHERE APPLICABLE). TOP OF WALL 4" MIN. ABOVE HIGHEST ADJACENT CEILING HEIGHT. BRACE TO STRUCTURE WHERE REQUIRED.
- 6" METAL STUDS @ 16" O.C. WITH 1 LAYER 5/8" GYP. BD. EACH SIDE. EXTEND TO BOTTOM OF STRUCTURAL DECK OR RATED ASSEMBLY.
- 6" METAL STUDS @ 16" O.C. WITH 1 LAYER 5/8" GYP. BD. EACH SIDE. TOP OF WALL 4" MIN. ABOVE HIGHEST ADJACENT CEILING HEIGHT. BRACE TO STRUCTURE WHERE REQUIRED.
- 3-5/8" METAL STUDS @ 16" O.C. WITH 1 LAYER 5/8" GYP. BD. ONE SIDE AND SHAFT WALL LINER ON CHASE SIDE.
- 6" METAL STUDS @ 16" O.C. WITH 1 LAYER 5/8" GYP. BD. ONE SIDE. TOP OF WALL 4" MIN. ABOVE HIGHEST ADJACENT CEILING HEIGHT. BRACE TO STRUCTURE WHERE REQUIRED.
- 6" METAL STUDS @ 16" O.C. WITH 2 LAYER 5/8" GYP. BD. EACH SIDE. EXTEND TO BOTTOM OF STRUCTURAL DECK OR RATED ASSEMBLY.
- 3-5/8" METAL STUDS @ 16" O.C. - SEE FS-1.2 FOR SHEATHING AND FINISHES
- 6" METAL STUDS @ 16" O.C. - SEE FS-1.2 FOR SHEATHING AND FINISHES

STATE OF ALABAMA
FRANK J. NOLA JR.
REG. 3871
3035
ROBERT VAN PEURSEM
REGISTERED ARCHITECT

NOLA VANPEURSEM ARCHITECTS, P.C.
MEMBER OF THE AMERICAN INSTITUTE OF ARCHITECTS
301 JEFFERSON STREET
HUNTSVILLE, ALABAMA 35801
(256) 533-6617
NVPARCHITECTS.COM

THIS DRAWING MAY NOT BE REPRODUCED IN WHOLE OR IN PART WITHOUT THE CONSENT OF NOLA/VANPEURSEM ARCHITECTS

ALABAMA A&M UNIVERSITY
WELCOME CENTER
3000 MERIDIAN ST.
HUNTSVILLE, ALABAMA

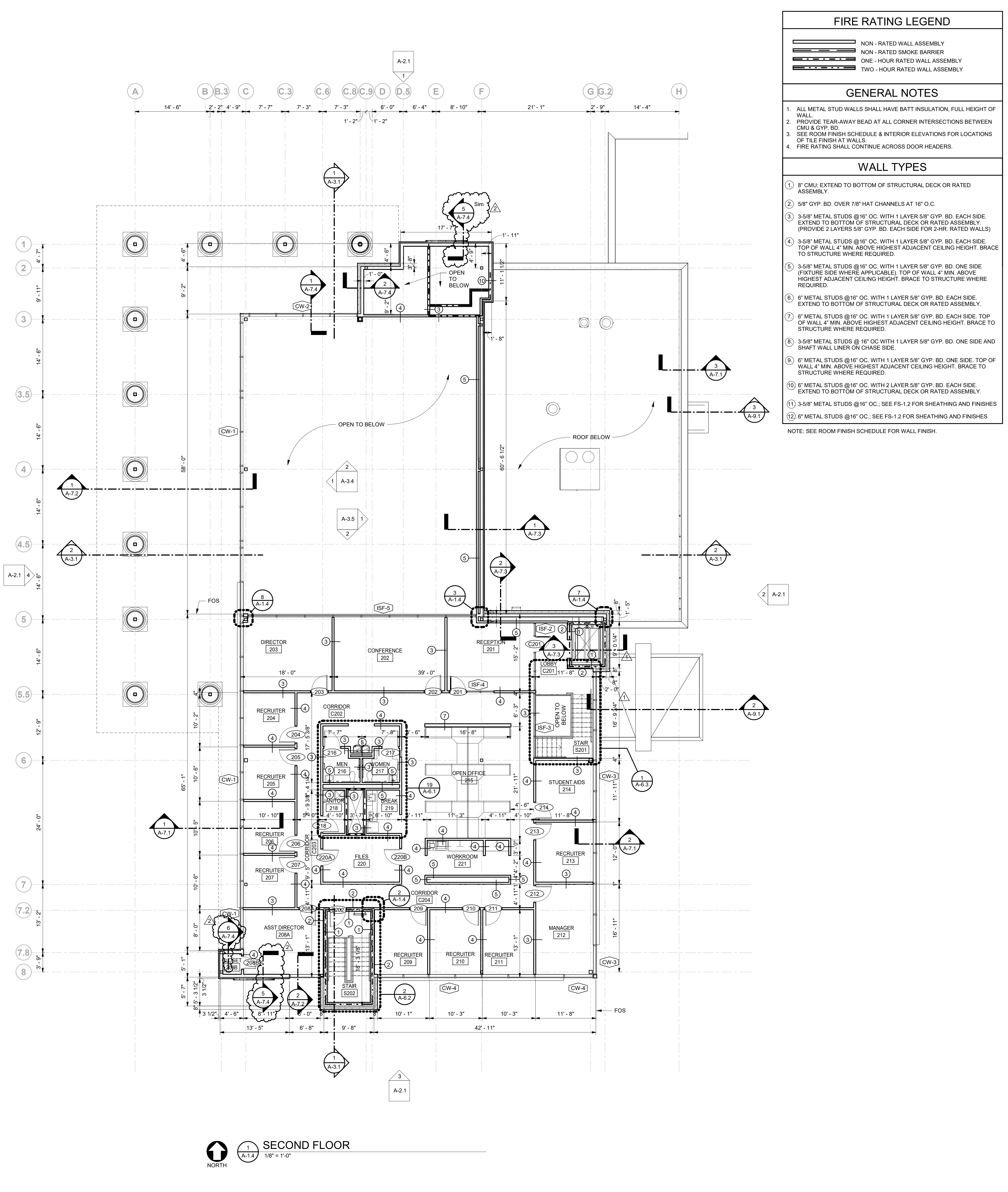
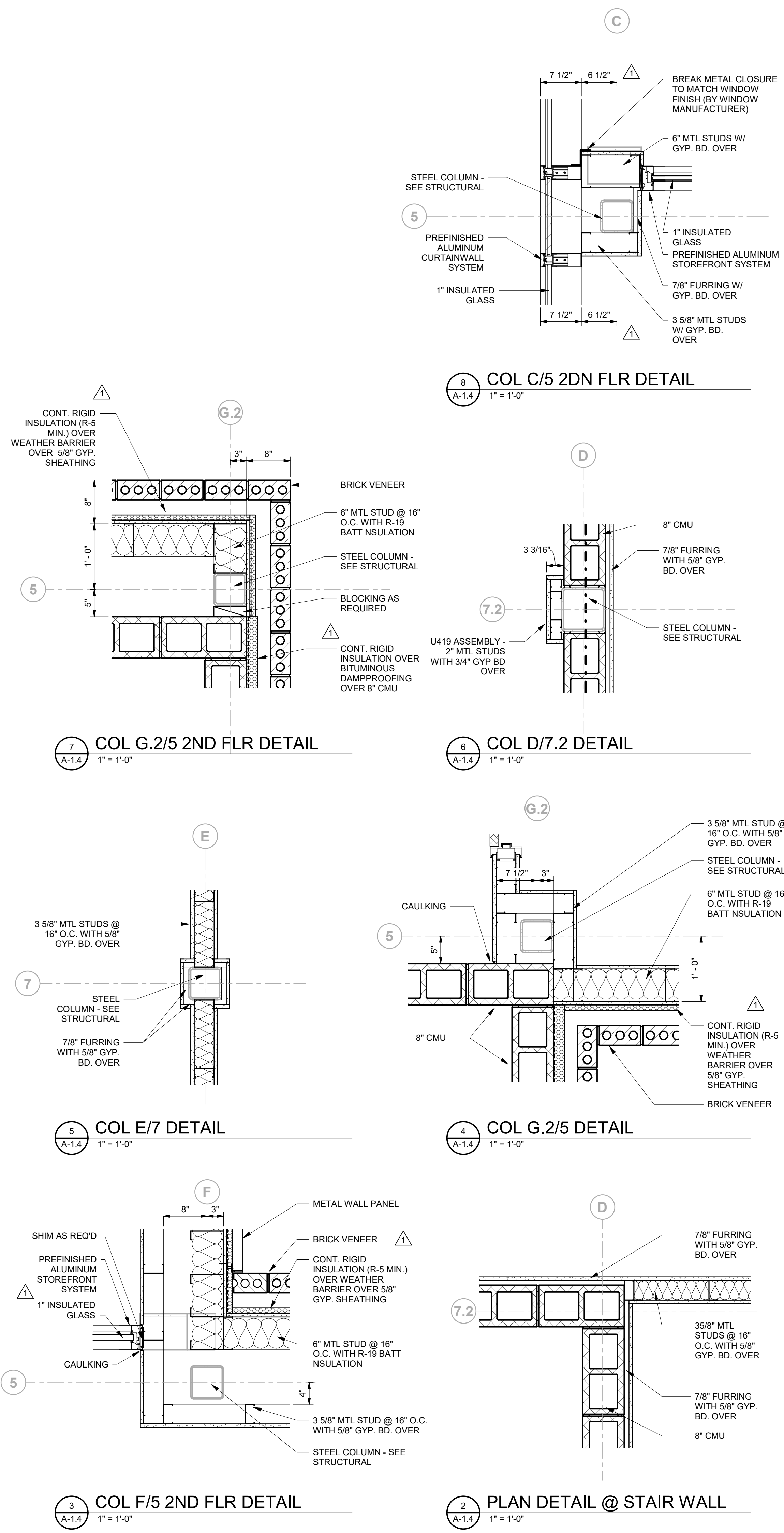
JOB NUMBER
18994

1/25/2021
DRAWN - CHECKED - DATE

REVISIONS
No. Description Date
1 ADDENDUM 6 4/1/2021
2 ADDENDUM 8 4/13/2021

SHEET TITLE
FIRST FLOOR PLAN

SHEET NUMBER
A-1.3
OF



FIRE RATING LEGEND	
	NON - RATED WALL ASSEMBLY
	NON - RATED SMOKE BARRIER
	ONE - HOUR RATED WALL ASSEMBLY
	TWO - HOUR RATED WALL ASSEMBLY

GENERAL NOTES	
1.	ALL METAL STUD WALLS SHALL HAVE BATT INSULATION, FULL HEIGHT OF WALL
2.	PROVIDE TEAR-AWAY BEAD AT ALL CORNER INTERSECTIONS BETWEEN CMU & GYP. BD.
3.	SEE ROOM FINISH SCHEDULE & INTERIOR ELEVATIONS FOR LOCATIONS OF TILE FINISH AT WALLS.
4.	FIRE RATING SHALL CONTINUE ACROSS DOOR HEADERS.

WALL TYPES	
1	8" CMU; EXTEND TO BOTTOM OF STRUCTURAL DECK OR RATED ASSEMBLY.
2	5/8" GYP. BD. OVER 7/8" HAT CHANNELS AT 16" O.C.
3	3-5/8" METAL STUDS @ 16" O.C. WITH 1 LAYER 5/8" GYP. BD. EACH SIDE. EXTEND TO BOTTOM OF STRUCTURAL DECK OR RATED ASSEMBLY. (PROVIDE 2 LAYERS 5/8" GYP. BD. EACH SIDE FOR 2-HR. RATED WALLS)
4	3-5/8" METAL STUDS @ 16" O.C. WITH 1 LAYER 5/8" GYP. BD. EACH SIDE. TOP OF WALL 4" MIN. ABOVE HIGHEST ADJACENT CEILING HEIGHT. BRACE TO STRUCTURE WHERE REQUIRED.
5	3-5/8" METAL STUDS @ 16" O.C. WITH 1 LAYER 5/8" GYP. BD. ONE SIDE. TOP OF WALL 4" MIN. ABOVE HIGHEST ADJACENT CEILING HEIGHT. BRACE TO STRUCTURE WHERE REQUIRED.
6	6" METAL STUDS @ 16" O.C. WITH 1 LAYER 5/8" GYP. BD. EACH SIDE. EXTEND TO BOTTOM OF STRUCTURAL DECK OR RATED ASSEMBLY.
7	6" METAL STUDS @ 16" O.C. WITH 1 LAYER 5/8" GYP. BD. EACH SIDE. TOP OF WALL 4" MIN. ABOVE HIGHEST ADJACENT CEILING HEIGHT. BRACE TO STRUCTURE WHERE REQUIRED.
8	3-5/8" METAL STUDS @ 16" O.C. WITH 1 LAYER 5/8" GYP. BD. ONE SIDE AND SHAFT WALL LINER ON CHASE SIDE.
9	6" METAL STUDS @ 16" O.C. WITH 1 LAYER 5/8" GYP. BD. ONE SIDE. TOP OF WALL 4" MIN. ABOVE HIGHEST ADJACENT CEILING HEIGHT. BRACE TO STRUCTURE WHERE REQUIRED.
10	6" METAL STUDS @ 16" O.C. WITH 2 LAYER 5/8" GYP. BD. EACH SIDE. EXTEND TO BOTTOM OF STRUCTURAL DECK OR RATED ASSEMBLY.
11	3-5/8" METAL STUDS @ 16" O.C.; SEE FS-1.2 FOR SHEATHING AND FINISHES
12	6" METAL STUDS @ 16" O.C.; SEE FS-1.2 FOR SHEATHING AND FINISHES

NOTE: SEE ROOM FINISH SCHEDULE FOR WALL FINISH.

ALABAMA A&M UNIVERSITY

WELCOME CENTER

3000 MERIDIAN ST.
HUNTSVILLE, ALABAMA

ALABAMA A&M UNIVERSITY

MEMBER OF THE AMERICAN INSTITUTE OF ARCHITECTS

NOLA VANPURSEM
ARCHITECTS, P.C.

301 JEFFERSON STREET
HUNTSVILLE, ALABAMA 35801

(256) 533-6617
NVPARCHITECTS.COM

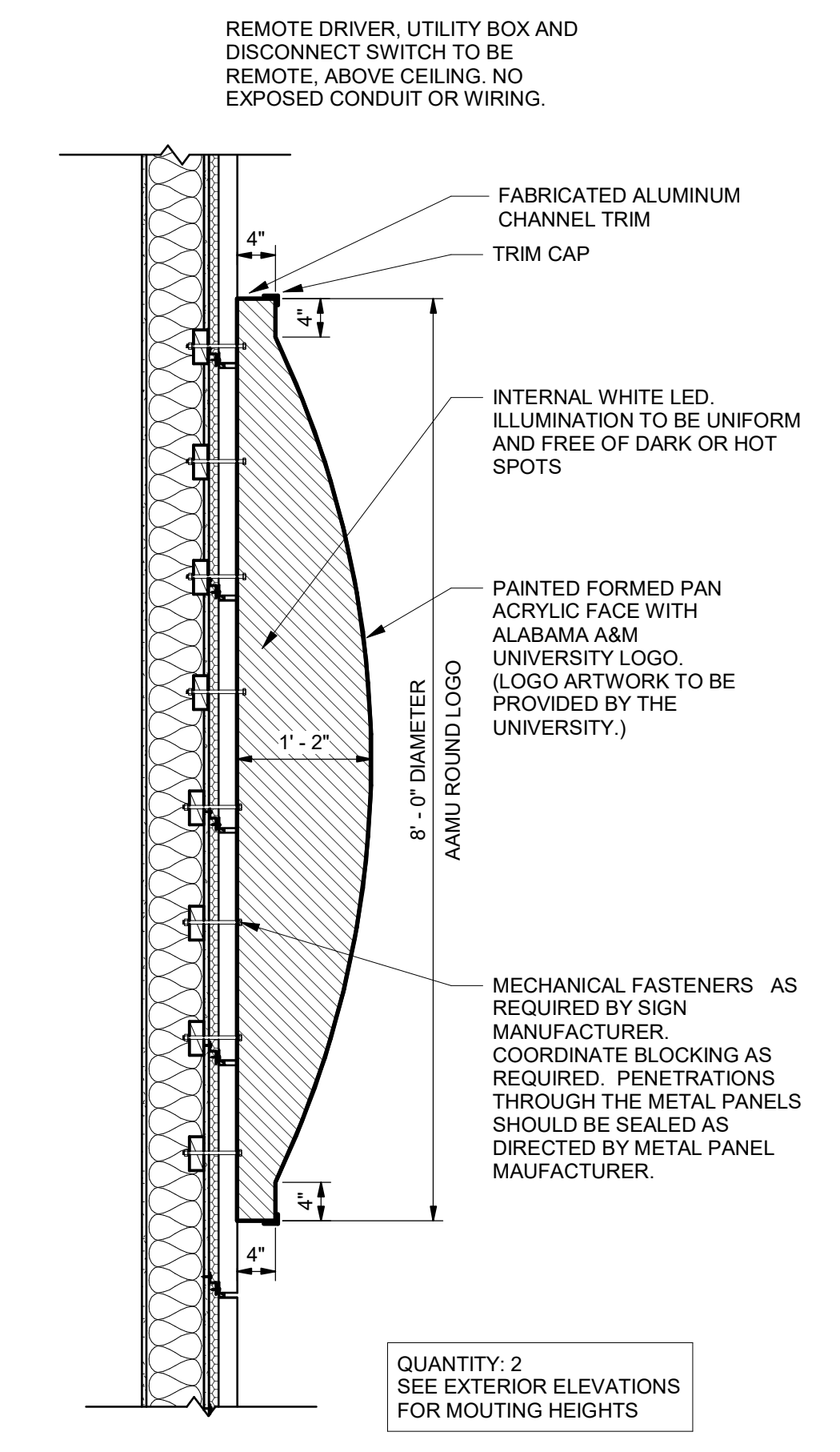
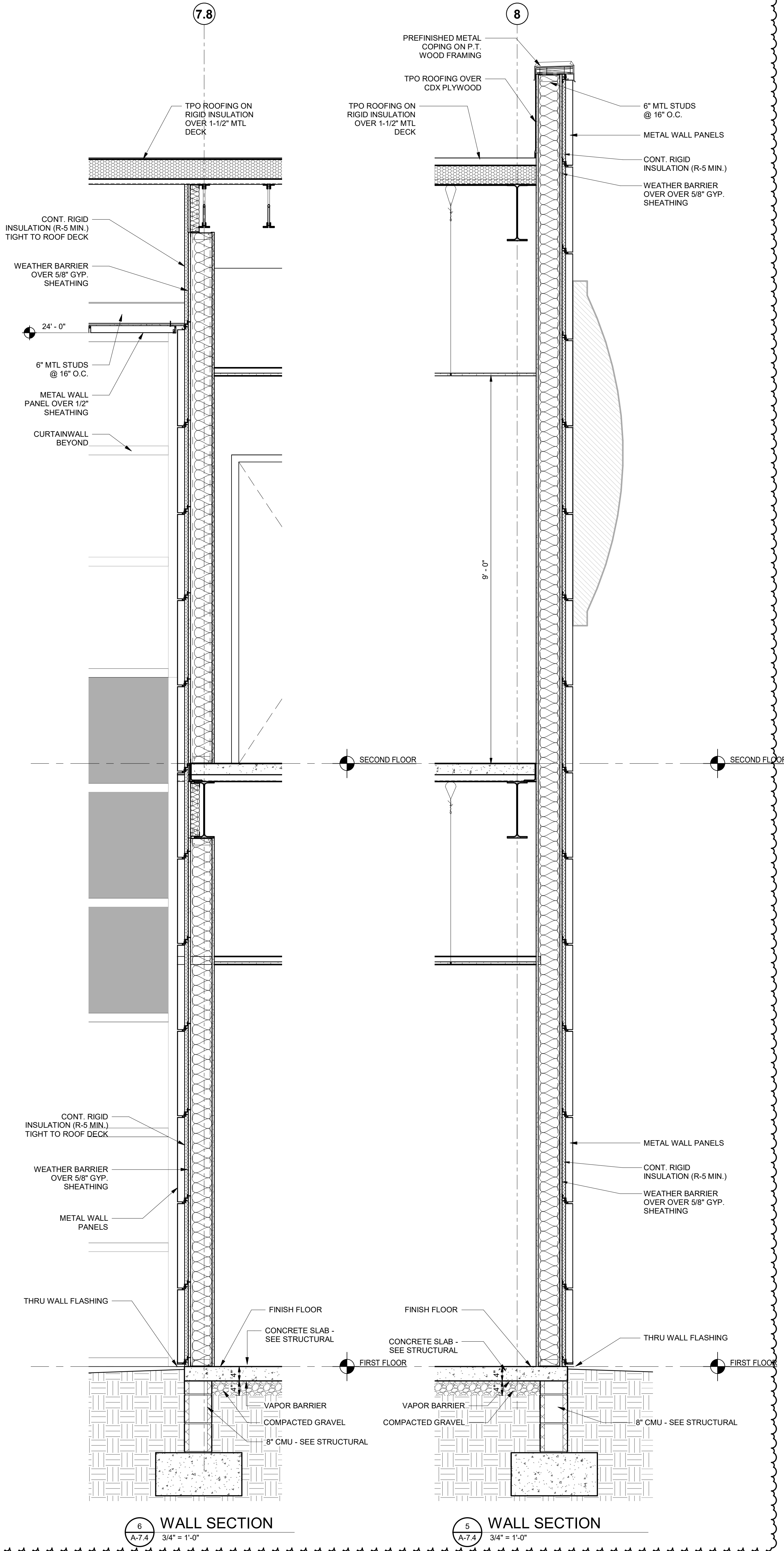
THIS DRAWING MAY NOT BE REPRODUCED IN WHOLE OR IN PART WITHOUT THE CONSENT OF NOLAVANPURSEM ARCHITECTS

JOB NUMBER	18994
1/25/2021	
DRAWN - CHECKED - DATE	
REVISIONS	
No. Description Date	
1. ADDENDUM 6	4/1/2021
2. ADDENDUM 8	4/13/2021

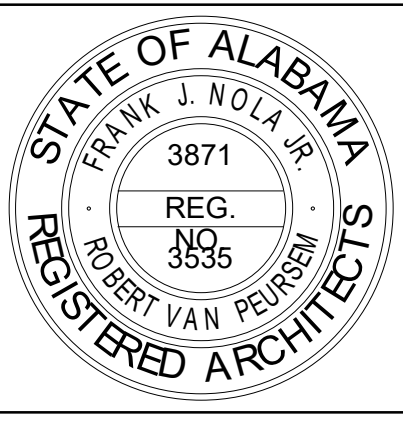
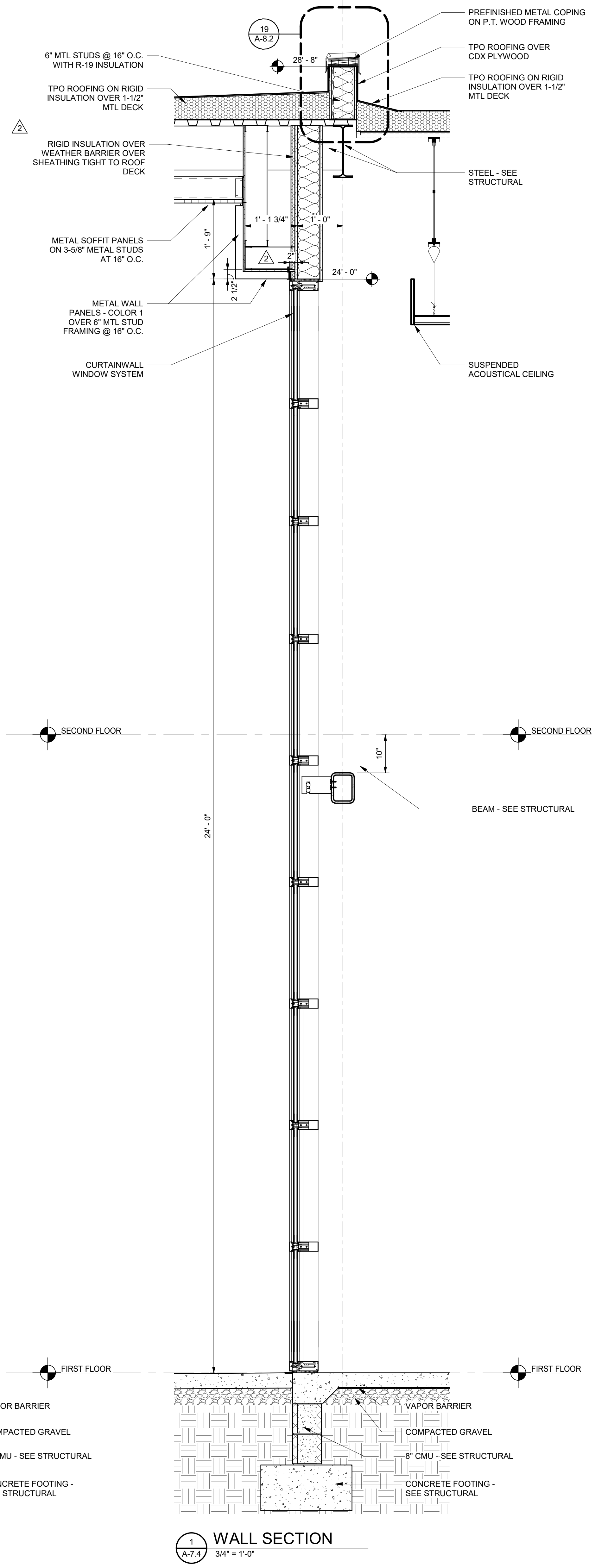
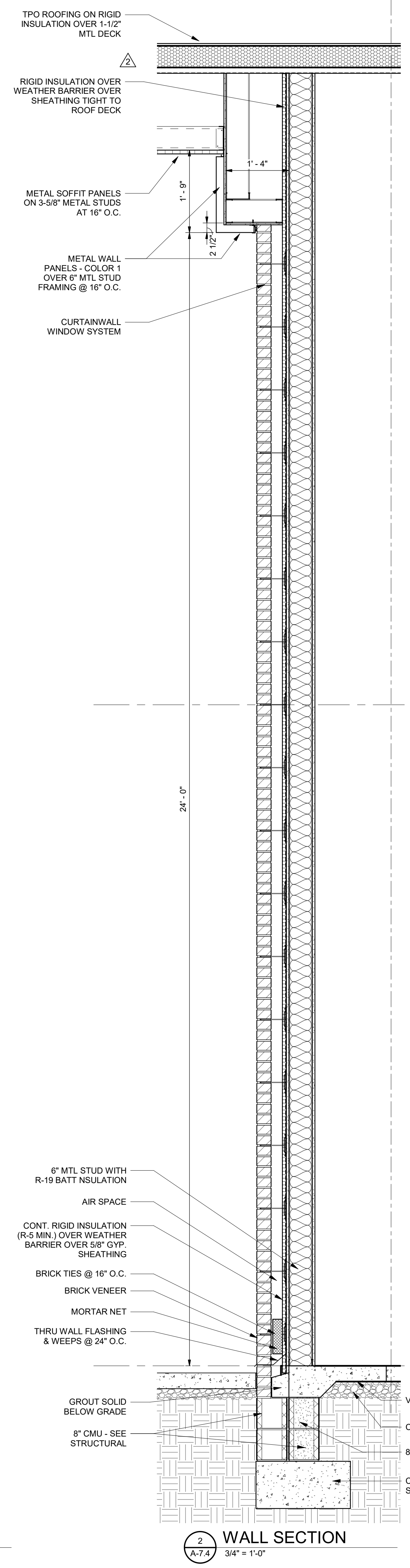
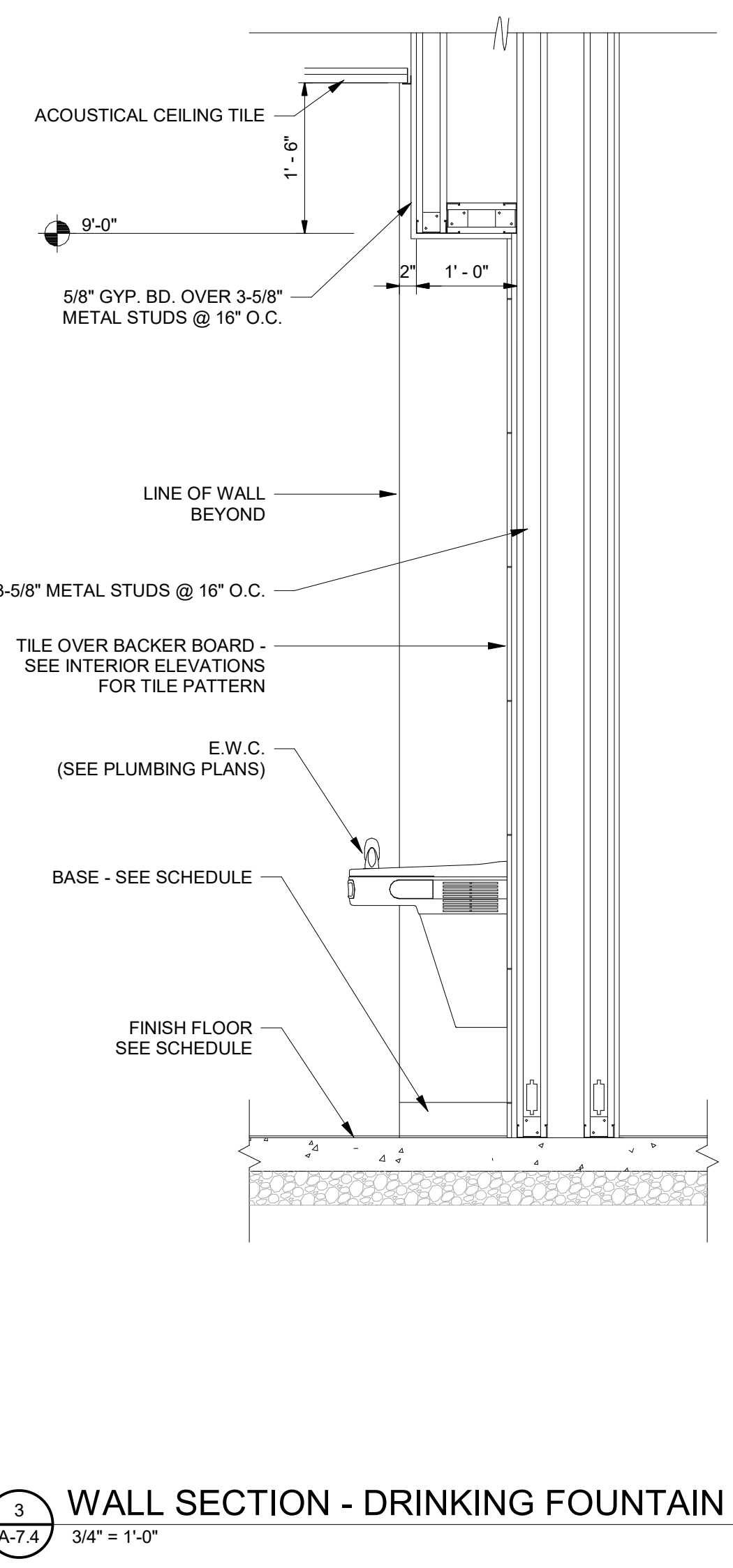
SHEET TITLE	SECOND FLOOR PLAN
SHEET NUMBER	A-1.4
OF	

C:\Revit\Local Files\A&M Welcome Center\A&M WELCOME CENTER - LAURA LOCAL.rvt

4/13/2021 5:13:55 PM



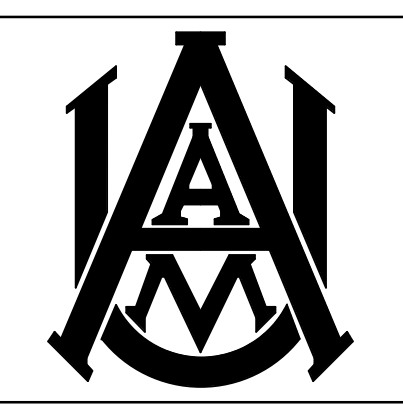
4 WALL SECTION - DRINKING FOUNTAIN
3/4" = 1'-0"



NOLA VANPURSEUM ARCHITECTS, P.C.
MEMBER OF THE AMERICAN INSTITUTE OF ARCHITECTS
301 JEFFERSON STREET
HUNTSVILLE, ALABAMA 35801
(256) 533-6617
NVPARCHITECTS.COM

THIS DRAWING MAY NOT BE REPRODUCED IN WHOLE OR IN PART WITHOUT THE CONSENT OF NOLA VANPURSEUM ARCHITECTS

ALABAMA A&M UNIVERSITY
WELCOME CENTER
3000 MERIDIAN ST.
HUNTSVILLE, ALABAMA



JOB NUMBER
18994

1/25/2021
DRAWN - CHECKED - DATE

REVISIONS	No.	Description	Date
	1	ADDENDUM 5	3/31/2021
	2	ADDENDUM 6	4/1/2021
	3	ADDENDUM 8	4/13/2021

SHEET TITLE
WALL SECTIONS

SHEET NUMBER
A-7.4
OF